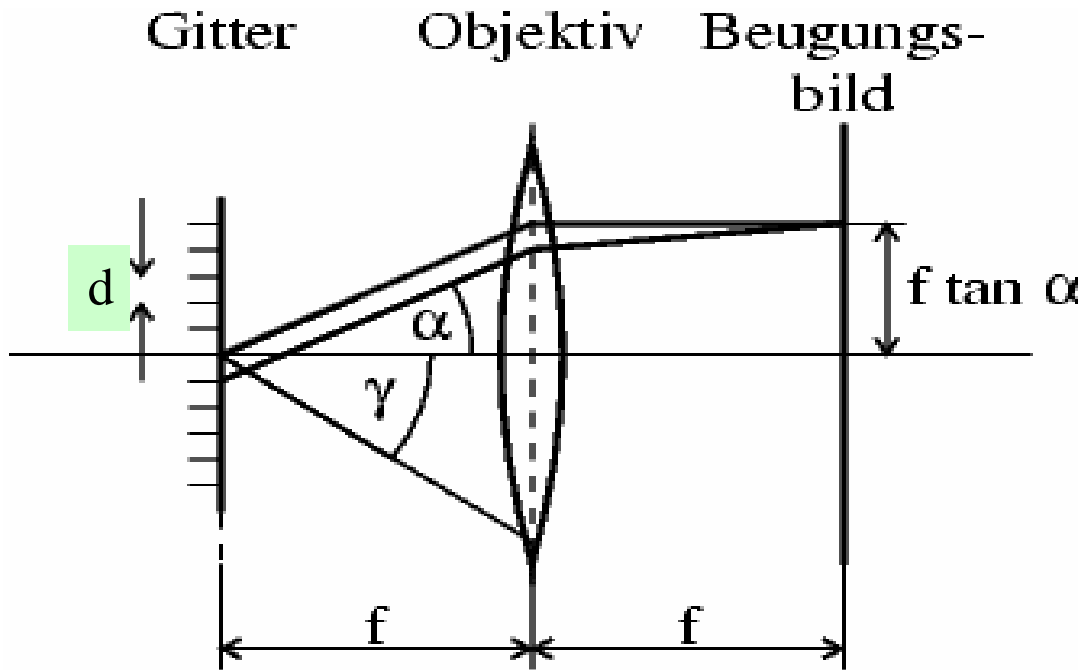


# Auflösungsvermögen



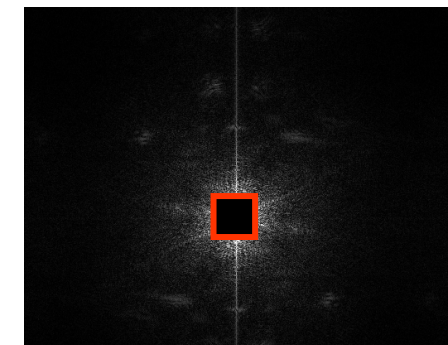
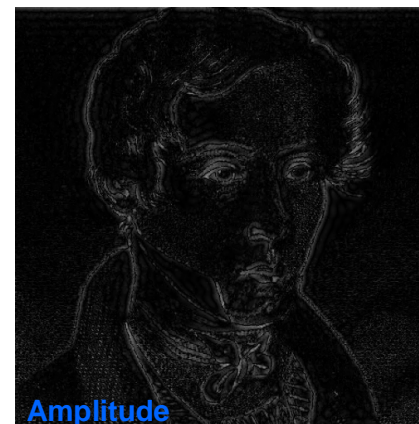
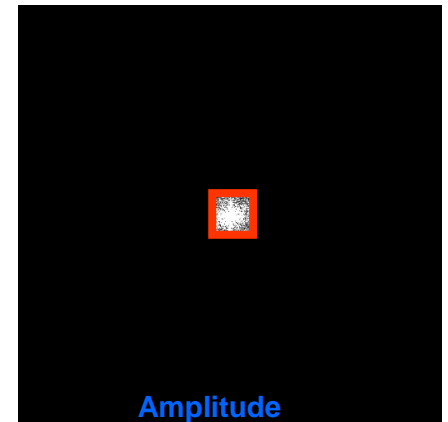
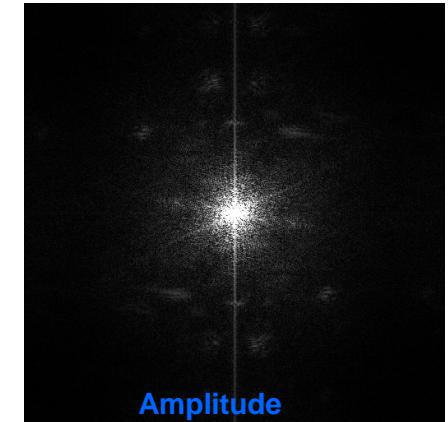
Zusammenhang zwischen Aperturwinkel  $\alpha$  und kleinstem auflösbaren Abstand  $d$ :

$$d = \frac{\lambda}{n \cdot \sin \alpha}$$

Reales Bild



Beugungsbild



Beschneiden des Beugungsbilds  
oben: Tiefpass, unten: Hochpass