

Research on melting of alloys

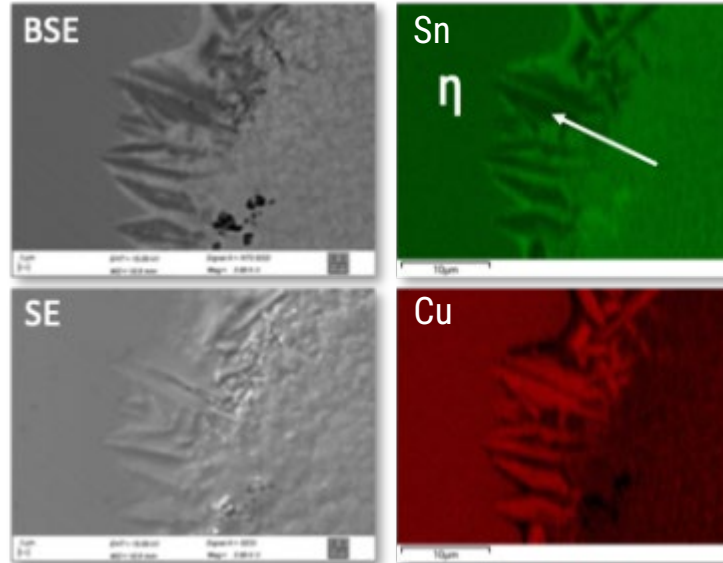
Metallic Materials – PD Dr. Lippmann

Topic:

Experimental investigation of the melting behavior of multiphase alloys as a basis for a fundamental understanding of process-related remelting processes

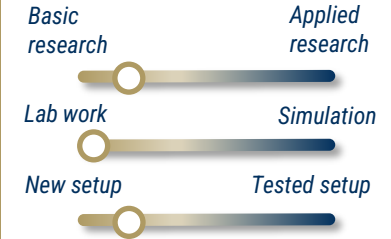
Thesis subjects:

- Laser-induced melting of eutectically solidified Al-Cu thin film samples
- Visualization of thermal melting in incongruent phases of the Cu-Sn system



Electron micrograph and element concentration show multiphase structure after melting

Scientific Profile



Language

German & English

Contact

stephanie.lippmann@uni-jena.de